



Elwell Buildings BS449 Range

Sectional steel pitched roofed buildings in pre-clad modules

A range of substantial buildings designed and manufactured to meet local planning requirements. Supplied with full technical specifications, foundation plans and design drawings.



Chasis development building at The University of Hertfordshire.



Local authority garage



Double bay MOT testing station



General purpose storage unit

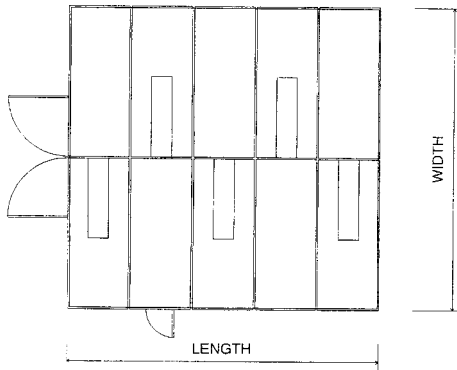
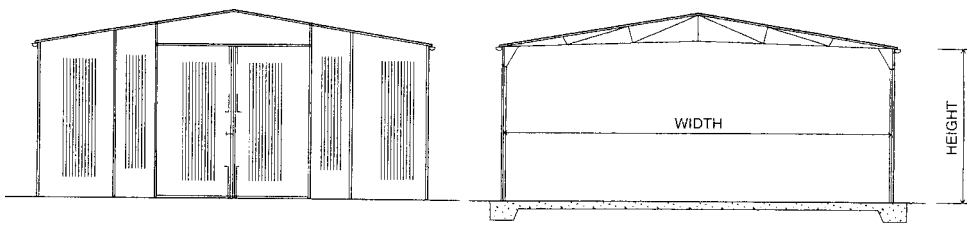


Rolling stock maintenance workshop



Timber storage unit

BS 449



Width Range	Height Range	Length
5030	1830	ANY LENGTH in increments of 1830
5490	2210	
6100	2590	
7320	3050	
9144	3657	
10000	4267	
12000	4876	

Buildings are available in any combination of the above measurements

Size Range

Spans	5.03m (16'6")	5.49m (18'0")
	6.10m (20'0")	7.32m (24'0")
	9.14m (30'0")	10.0m (32'9")
	12.0m (39'4")	
Heights	1.83m (6'0")	2.21m (7'3")
	2.59m (8'6")	3.05m (10'0")
	3.66m (12'0")	4.26m (14'0")
	4.87m (16'0")	
Lengths	Unlimited length, in 1.83m modules	

Standard Features

Supplied in factory finished panels
- ideal for otherwise inaccessible spaces

May be sited as a permanent or a temporary structure requiring minimum of foundations

Fully re-locatable & extendible

Manufactured entirely of non combustible materials
- Class "O" fire rated

Constructed entirely of steel for strength & security

Single skin, full or part insulation

Options

Doors - Roller shutters, chain or electrical operation
hinged double doors - Personnel doors - Fire Exits
- All available in a variety of positions

Windows - Upvc Double glazed windows - Steel frame,
fixed or opening security windows, with or without shutters.

Roof lights - Translucent roof light panels

Rainwater Management - UPVC in a choice of colours

Elwell Buildings